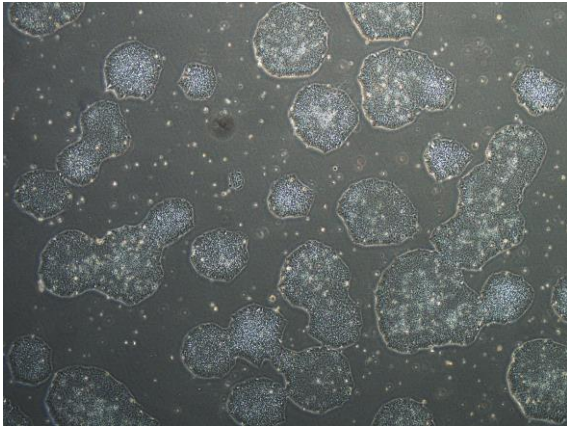
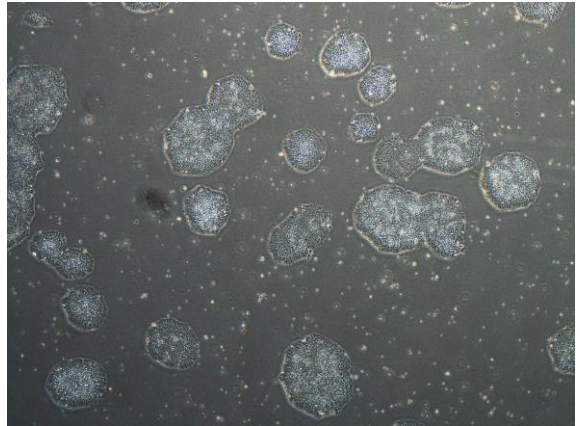


## 【 CiRA-j-1154 】 Morphology of iPSC colonies

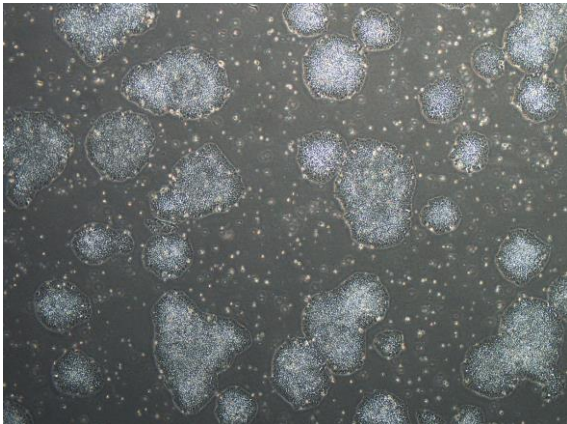
CiRA-j-1154-A: passage-3



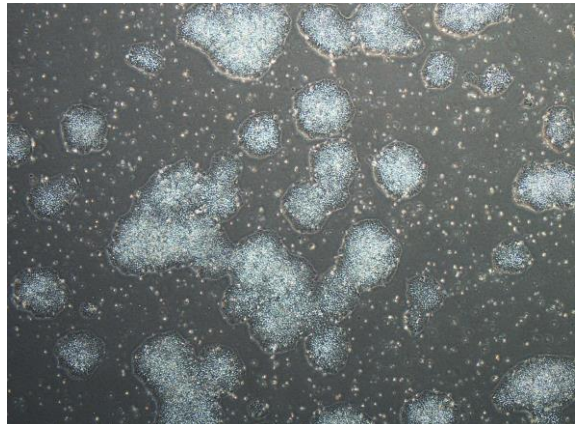
CiRA-j-1154-B: passage-3



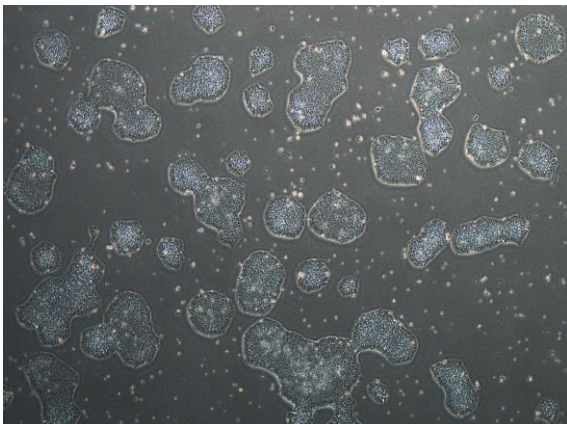
CiRA-j-1154-C: passage-3



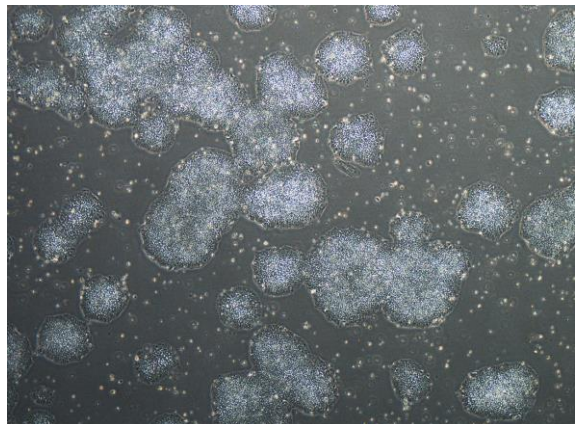
CiRA-j-1154-D: passage-3



CiRA-j-1154-E: passage-3



CiRA-j-1154-F: passage-3



( All images were captured at 4x magnification )